

WHAT'S HAPPENING NOW?

Works that have been undertaken to date:

- Completed bulk excavation
- Completed podium structure to George Street Level
- Commence lift structures
- Completed service connections on George Street
- Continued heritage structural works
- Scaffold installed to York Street elevation
- Construction of new B class hoarding to George Street

WHAT'S COMING UP?

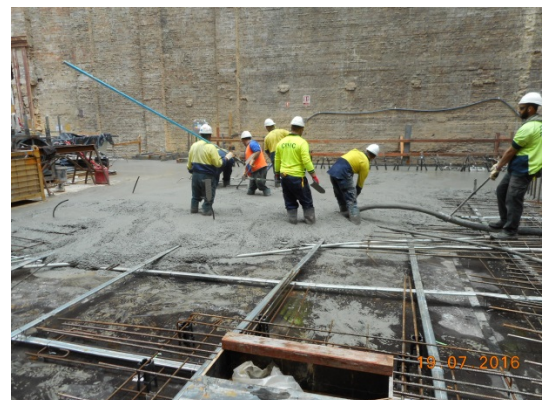
The following activities will occur in the coming months:

- Continue concrete structural works to new building and heritage buildings
- Installation of structural steel elements to Spiden House
- Continue services' works including roughing in of basement levels
- Continued rectification and installation of heritage windows and facade to York Street elevation
- Installation of alimak hoist

For further information on the project, refer to the 'Project website' – www.yorkandgeorge.com.au

FAQs

1. How long will the work be going on?
We anticipate finishing mid 2018.
2. What are the working times?
Hours are from Monday to Friday 7am to 7pm and Saturdays 7am to 5pm
3. Accessibility around the site?
Normal access will be available along York Street but George Street is now effected by the Light Rail traffic changes



Watpac Head Office: Level 5, 8 Australia Avenue, Sydney Olympic Park NSW 2127

Watpac's website: www.watpac.com.au

Project website: www.yorkandgeorge.com.au