

**WHAT'S HAPPENING NOW?**

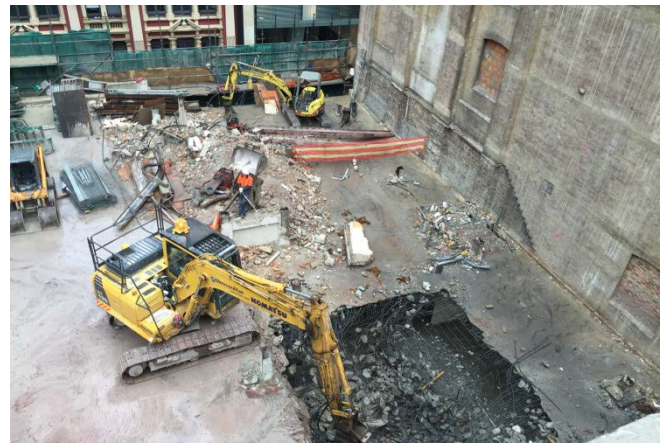
Works that have been undertaken to date:

- Internal demolition and strip out works within the York Street – Heritage buildings – Spiden and Carlton Houses
- Demolition of the George Street buildings
- Structural support system to 'light well' section of the northern adjoining building

**WHAT'S COMING UP?**

During the coming months the following activities will occur:

- Preparation for piling works to support the tower crane and boundary retention system in readiness for excavation
- Complete the George Street building demolition
- Commence boundary retention system and bulk excavation
- Continue works within the York Street – Heritage buildings
- Services' connections in preparation for upcoming 'Light Rail' works



Other key factors regarding the project:

- **No** hydraulic hammer periods known as 'respite periods' have been voluntarily introduced for the demolition activities i.e. Mon – Fri between 9am – 12noon and 2pm - 5pm
- Light rail works between Market and King Streets scheduled to commence 23 October 2015

**FAQs**

1. How long will the work be going on?

*We anticipate finishing mid 2018.*

2. What are the working times?

*Hours are from Monday to Friday 7am to 7pm and Saturdays 7am to 5pm.*

3. Accessibility around the site?

Normal access will be available along George and York Streets



**Watpac Head Office:** Level 5, 8 Australia Avenue, Sydney Olympic Park NSW 2127