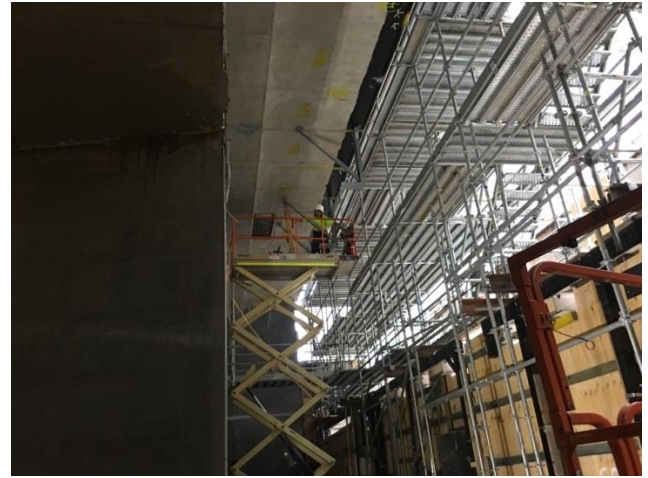


WHAT'S HAPPENING NOW?

Works that have been undertaken to date include:

- Tower core jumpform up to Level 7
- Lift structures complete up to Level 6
- Scaffold/formwork system installation for Level 7 light-well overhang
- Blockwork installation to basement levels
- Level 7 Carlton House façade stones installation
- Commencement of substation fit-out
- Commencement of façade installation to George Street
- Commencement of Level 3 plant room works



WHAT'S COMING UP?

The following activities are scheduled to occur in the coming months:

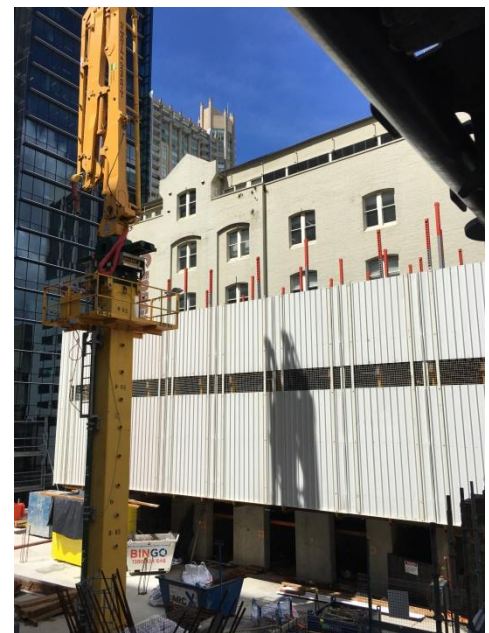
- Completion of Carlton House lift core
- Substation fit out
- Completion of Carlton House façade works
- Demolition and reinstatement of Spiden House Level 7 stonework
- Completion of structure to Level 7 Spiden House
- Completion of George Street façade glazing
- Commencement of truck lift installation
- Ongoing basement services installation



For further information on the project, refer to the 'Project website' – www.yorkandgeorge.com.au

FAQs

1. How long will the work be going on?
We anticipate finishing mid 2018.
2. What are the working times?
Hours are from Monday to Friday 7am to 7pm and Saturdays 7am to 5pm
3. Accessibility around the site?
Normal access will be available along York Street but George Street is now affected by the Light Rail traffic changes



Watpac Head Office: Level 5, 8 Australia Avenue, Sydney Olympic Park NSW 2127

Watpac's website: www.watpac.com.au

Project website: www.yorkandgeorge.com.au

Enquiries

Watpac project hotline
E 383georgest@watpac.com.au