

## WHAT'S HAPPENING NOW?

Works that have been undertaken to date:

- Continued retention systems
- Continued bulk excavation
- Works continue in heritage buildings
- Removed B class hoarding and replaced with A Class

## WHAT'S COMING UP?

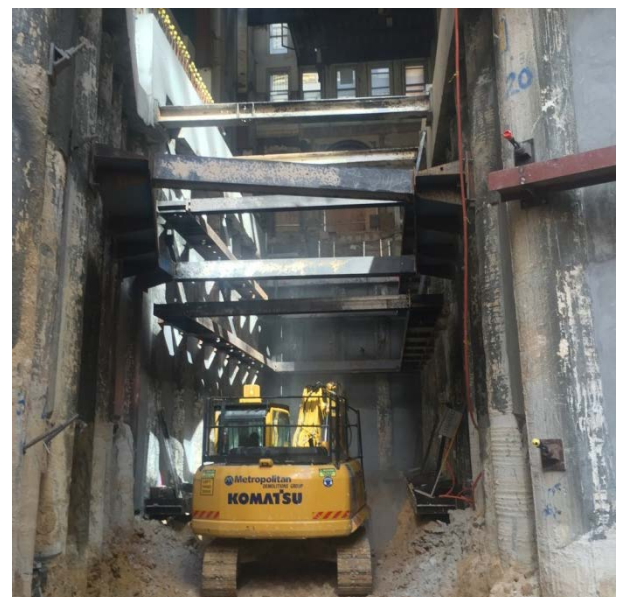
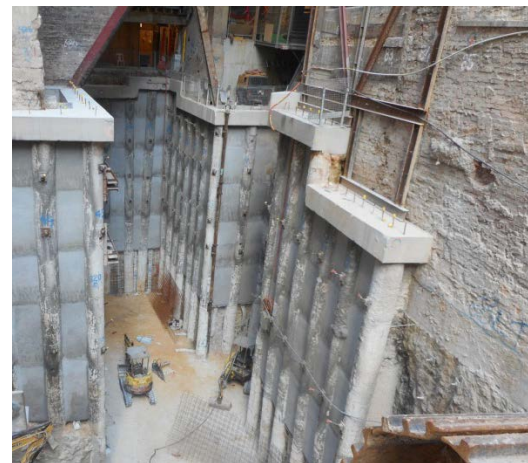
The following activities will occur in the coming months:

- Completion of bulk excavation and retention systems
- Continue detail excavation for footings and pits
- Works within heritage buildings
- Light Rail project commences George Street stormwater drainage
- Install scaffold along York Street for future façade works and protection

For further information on the project, refer to the 'Project website' – [www.yorkandgeorge.com.au](http://www.yorkandgeorge.com.au)

## FAQs

1. How long will the work be going on?  
*We anticipate finishing mid 2018.*
2. What are the working times?  
*Hours are from Monday to Friday 7am to 7pm and Saturdays 7am to 5pm*
3. Accessibility around the site?  
*Normal access will be available along York Street but George Street is now effected by the Light Rail traffic changes*



**Watpac Head Office:** Level 5, 8 Australia Avenue, Sydney Olympic Park NSW 2127

**Watpac's website:** [www.watpac.com.au](http://www.watpac.com.au)

**Project website:** [www.yorkandgeorge.com.au](http://www.yorkandgeorge.com.au)