

## WHAT'S HAPPENING NOW?

Works that have been undertaken to date:

- Completed retention systems
- Completed bulk excavation
- Commenced basement slab
- Commence lift structures
- Completed service connections on George Street
- Continue heritage structural works
- Completed inground services
- Completed detailed / foundation works
- Removal of the Spiden House roof (southern heritage building)



## WHAT'S COMING UP?

The following activities will occur in the coming months:

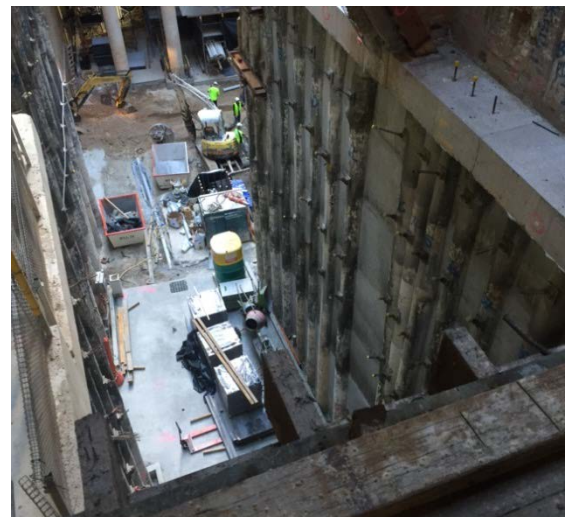
- Continue concrete structural works to new building and heritage buildings
- Scaffold to York Street elevation
- Continue services' works
- New B class hoarding to George Street



For further information on the project, refer to the 'Project website' – [www.yorkandgeorge.com.au](http://www.yorkandgeorge.com.au)

## FAQs

1. How long will the work be going on?  
*We anticipate finishing mid 2018.*
2. What are the working times?  
*Hours are from Monday to Friday 7am to 7pm and Saturdays 7am to 5pm*
3. Accessibility around the site?  
*Normal access will be available along York Street but George Street is now effected by the Light Rail traffic changes*



**Watpac Head Office:** Level 5, 8 Australia Avenue, Sydney Olympic Park NSW 2127

**Watpac's website:** [www.watpac.com.au](http://www.watpac.com.au)

**Project website:** [www.yorkandgeorge.com.au](http://www.yorkandgeorge.com.au)