

WHAT'S HAPPENING NOW?

Works that have been undertaken to date:

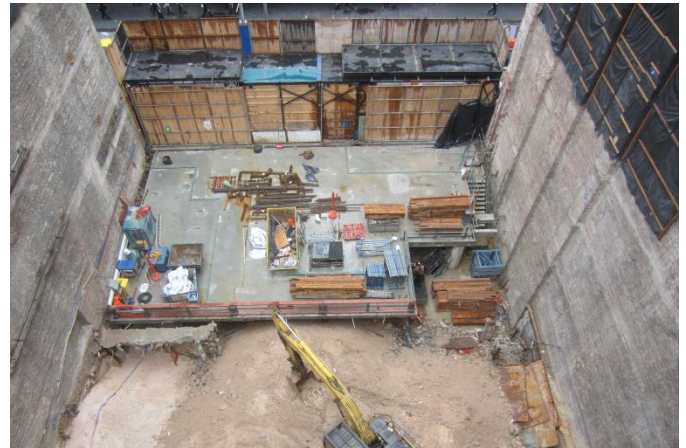
- Completed piling works
- Constructed George Street loading platform
- Commence retention systems

WHAT'S COMING UP?

The following activities will occur in the coming months:

- Complete demolition of the basement structures
- Complete loading platform support structure
- Continue with retention systems as excavation progresses
- Commence bulk excavation
- Services' connections in preparation for upcoming 'Light Rail' works e.g. High Voltage Pit

For further information on the project, refer to the 'Project website' – www.yorkandgeorge.com.au



FAQs

1. How long will the work be going on?
We anticipate finishing mid 2018.
2. What are the working times?
Hours are from Monday to Friday 7am to 7pm and Saturdays 7am to 5pm.
3. Accessibility around the site?
Normal access will be available along York Street but George Street is now effected by the Light Rail traffic changes

Watpac Head Office: Level 5, 8 Australia Avenue, Sydney Olympic Park NSW 2127

Watpac's website: www.watpac.com.au

Project website: www.yorkandgeorge.com.au