

WHAT'S HAPPENING NOW?

Works that have been undertaken to date:

- Continued retention systems
- Continued bulk excavation
- Works continue in heritage buildings

WHAT'S COMING UP?

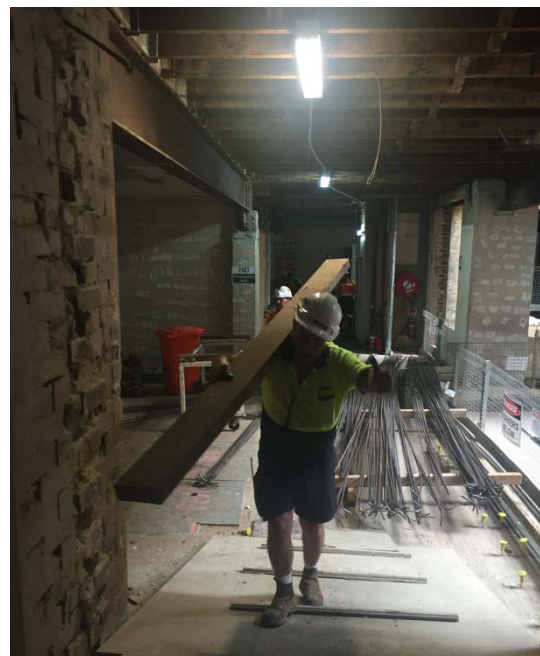
The following activities will occur in the coming months:

- Continue with retention systems as excavation progresses
- Continue bulk excavation
- Works within heritage buildings
- Light Rail project commences George Street stormwater drainage
- Install scaffold along York Street for future façade works and protection

For further information on the project, refer to the 'Project website' – www.yorkandgeorge.com.au

FAQs

1. How long will the work be going on?
We anticipate finishing mid 2018.
2. What are the working times?
Hours are from Monday to Friday 7am to 7pm and Saturdays 7am to 5pm.
3. Accessibility around the site?
Normal access will be available along York Street but George Street is now effected by the Light Rail traffic changes



Watpac Head Office: Level 5, 8 Australia Avenue, Sydney Olympic Park NSW 2127

Watpac's website: www.watpac.com.au

Project website: www.yorkandgeorge.com.au